

# DT 140

## DIAMETER MEASURING SYSTEM

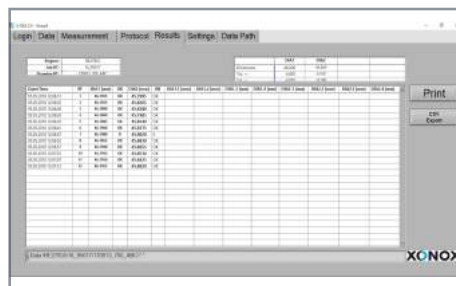


- \_ highly precise and easy to use system for measuring the diameters of optical elements in both, production and quality inspection environments
- \_ designed for long term reliability and cost effective operation
- \_ measurements of secondary diameters, and roundness are supported in addition to the primary diameter
- \_ lenses automatically centered with an innovative precision 3-jaw chuck system
- \_ direct measurement of diameter achieved through automatic, pneumatic actuation of probes that touch the edge of the workpiece
- \_ probe contact height is adjustable to be compatible with steps and other edge features
- \_ optimized for safe, fast and easy setup and loading of workpiece
- \_ many times proven, absolutely risk- / damage free measurement of even very thin, knife edge and sensitive components
- \_ large measurement range from below Ø8mm up to Ø140mm
- \_ foot switch for easy and efficient measurements of series
- \_ equipped with software and controller package, "X-dia" offering additional measurement modes, automatic documentation creation, and data logging of measurement results

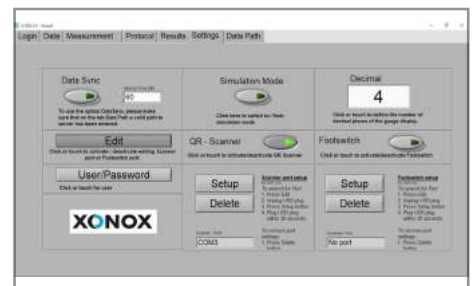
## SOFTWARE + CONTROLLER PACKAGE X-dia



- easy and touch screen optimized dialogue user interface
- automatic counting / numbering of lenses
- green (in spec) or red (out of spec) display of measurements
- data input manually or via QR code reader



- automatic documentation of all measurements
- listing of DIA1, DIA2 and Roundness
- automatic marking IN/OUT of spec for all dimensions
- extensive data export functions + X-metroLINK compatible



- intelligent and easy-to-use setup for administrative functions and user handling
- quick setup for auxilliary equipment such as QR reader, footswitch etc.
- easy network integration and path settings for documentation

<b>WORKING RANGE</b>	50 mm travel of measuring gauges on different adjustable positions		
<b>DIAMETER RANGE</b>	Ø8 - Ø140 mm		
<b>MEASURING SYSTEM</b>	digital precision measuring gauge with 0.5µ resolution		
<b>MEASURING ACCURACY</b>	Resolution: 0.0005 mm	Accuracy: $\leq$ 0.002 mm	Repeatability: 0.001 mm
<b>DIMENSIONS (WxDxH) / WEIGHT</b>	650 x 300 x 350 mm (additional space required for X-dia PC) / approx. 30kg		
<b>CONNECTIONS</b>	110-240 V / 50-60 Hz, compressed air: 6 bar		
<b>COLOR</b>	Light grey RAL 7035		