

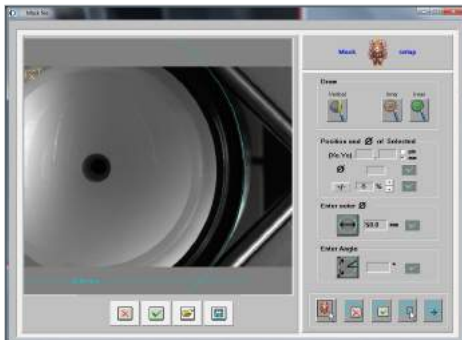
EPS100



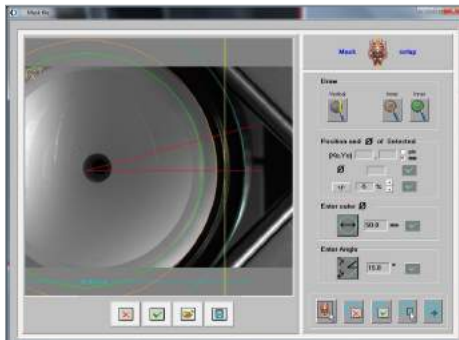
EDGE AND MASK PAINTING SYSTEM

- _ system for safe, easy and efficient painting and varnishing of edges and precise surface masks on optical components
- _ observation of the painting area via live video system with monitor and high magnification
- _ exact adjustment of aperture mask for painting limits via software and precise gauge
- _ adjustment of lens position and easy re-loading of lenses using precisely adjustable and pneumatically moveable V-Stop
- _ quality control for mask diameter directly after finishing of painting
- _ infinitely adjustable rotation speed of workpiece spindle
- _ infinitely adjustable vacuum for lens holding on resin chuck
- _ pedals for vacuum on/off and spindle rotation on/off for easy and efficient use even when painting high volumes
- _ operation optionally via standard camera software or comprehensive software tool XONOX "X-paint" with advanced functionality for various and multiple masks

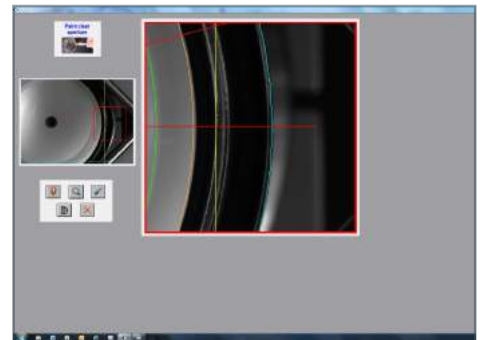
SOFTWARE + CONTROLLER PACKAGE X-paint



comprehensive, easy to use mask and angle editor with precise scaling tool



multiple masks, angles angle marks and precise scaling of mask dimensions.



easy to use, variable zoom for live painting observation and final quality inspection

WORKING RANGE	up to workpiece diameter 100 mm
SPINDLE SPEED	0 - 300 rpm infinitely variable
VACUUM	0 to -0.6 bar infinitely adjustable
DIMENSIONS (WxDxH)	500 x 300 x 700 mm (additional space required for PC and monitor)
WEIGHT	approx. 30 kg
CONNECTIONS	110-240 V / 50-60 Hz, compressed air: 6 bar
COLOR	Light grey RAL 7035